



Welcome SR 780/ Fruitville Road

Corridor Vision Plan Virtual Public Meeting

FDOT District One
June 25, 2020

*THIS IS A VISIONING EXERCISE AND THE RESULTS OF THIS WILL VARY
BASED ON INPUT RECEIVED FROM STAKEHOLDERS AND THE COMMUNITY

Today's Agenda

1. Webinar information
2. Project presentation with interactive polling
3. Question and answer



This meeting is being recorded.



The recording will be posted on the project website.



All attendees will be placed in '**Listen Only**' mode throughout the meeting.

For technical issues, visit GoToWebinar online at:

[Support.goto.com](https://support.goto.com)

Or through your confirmation email, click on check system requirements (below):

How To Join The Webinar

Thu, Jun 25, 2020 4:30 PM - 5:30 PM EDT

Add to Calendar: [Outlook® Calendar](#) | [Google Calendar™](#) | [iCal®](#)

1. Click the link to join the webinar at the specified time and date:

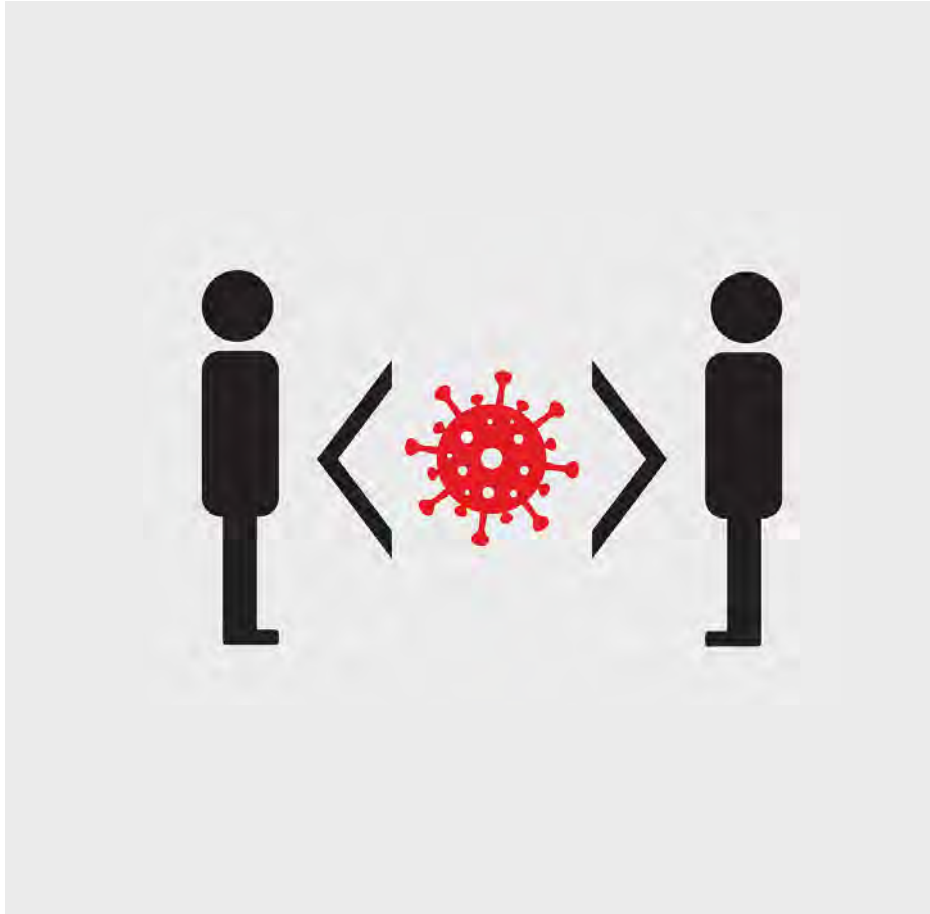
Join Webinar

Note: This link should not be shared with others; it is unique to you.

Before joining, be sure to [check system requirements](#) to avoid any connection issues.



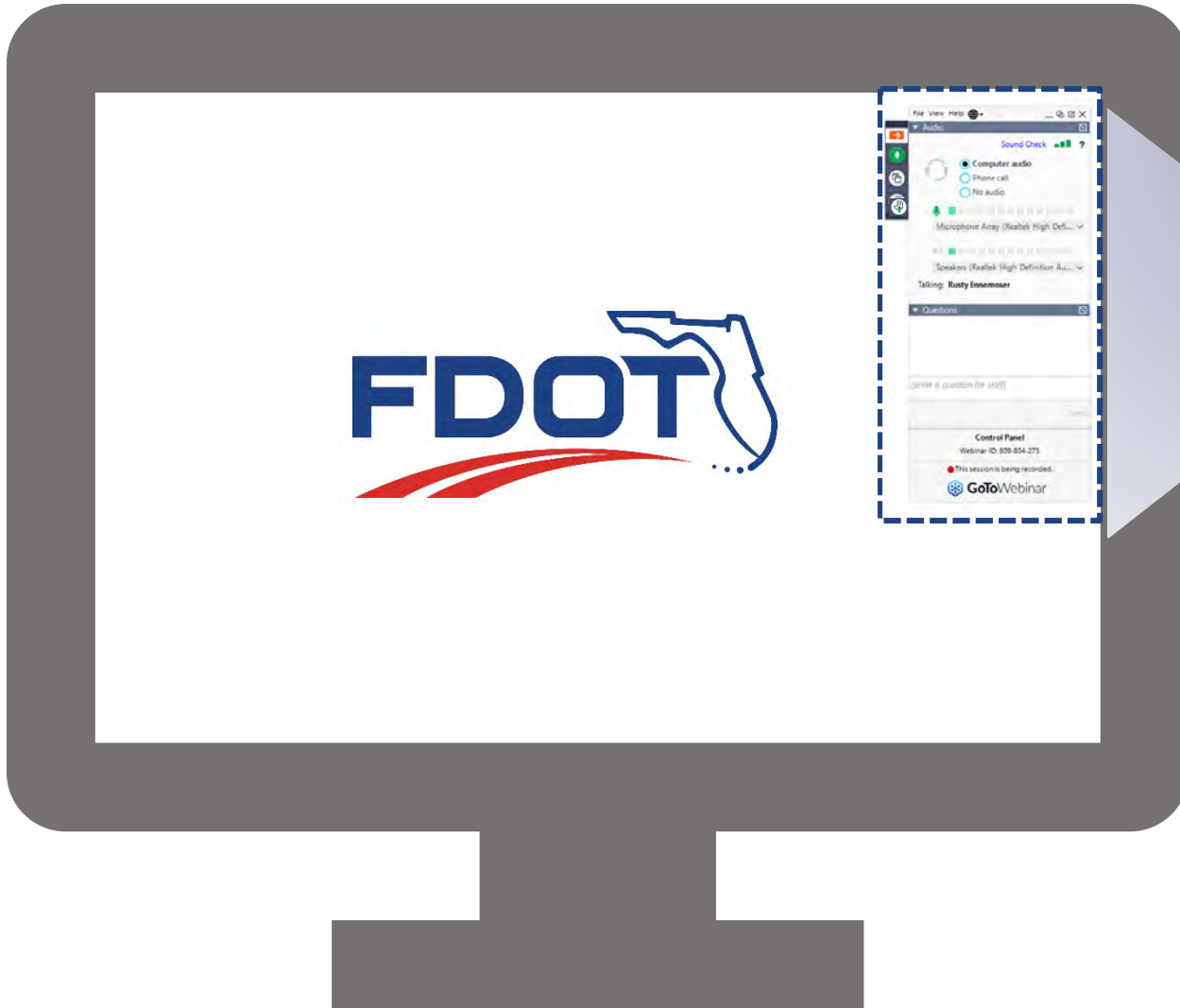
About the Virtual Meeting Format



- **COVID-19 pandemic**
- **A State of Emergency is in effect (Executive Order 20-52)**
- **GoToWebinar online meeting platform**
- **No cost to the public to log-in or dial-in to the meeting**
- **All materials can be downloaded from the project website**

www.swflroads.com/sr780/fruitvillevision

Control Panel Use



File View Help

Audio

Sound Check [Signal Icon] ?

Computer audio

Phone call

No audio

Microphone Array (Realtek High Defi...)

Speakers (Realtek High Definition Au...)

Talking: Jennifer Dorning

Questions

[Enter a question for staff]

Send

Control Panel

Webinar ID: 809-804-275

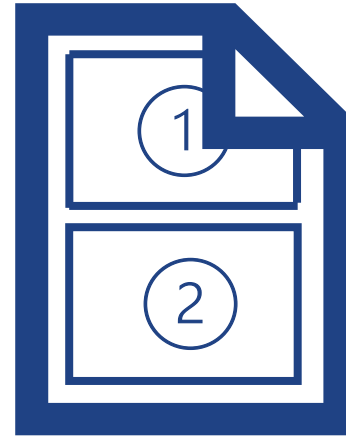
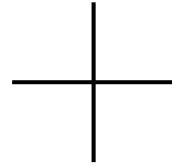
This session is being recorded.

GoToWebinar

Information for Dial-in Attendees



Dial-in listeners



**Paper copy of meeting
presentation**

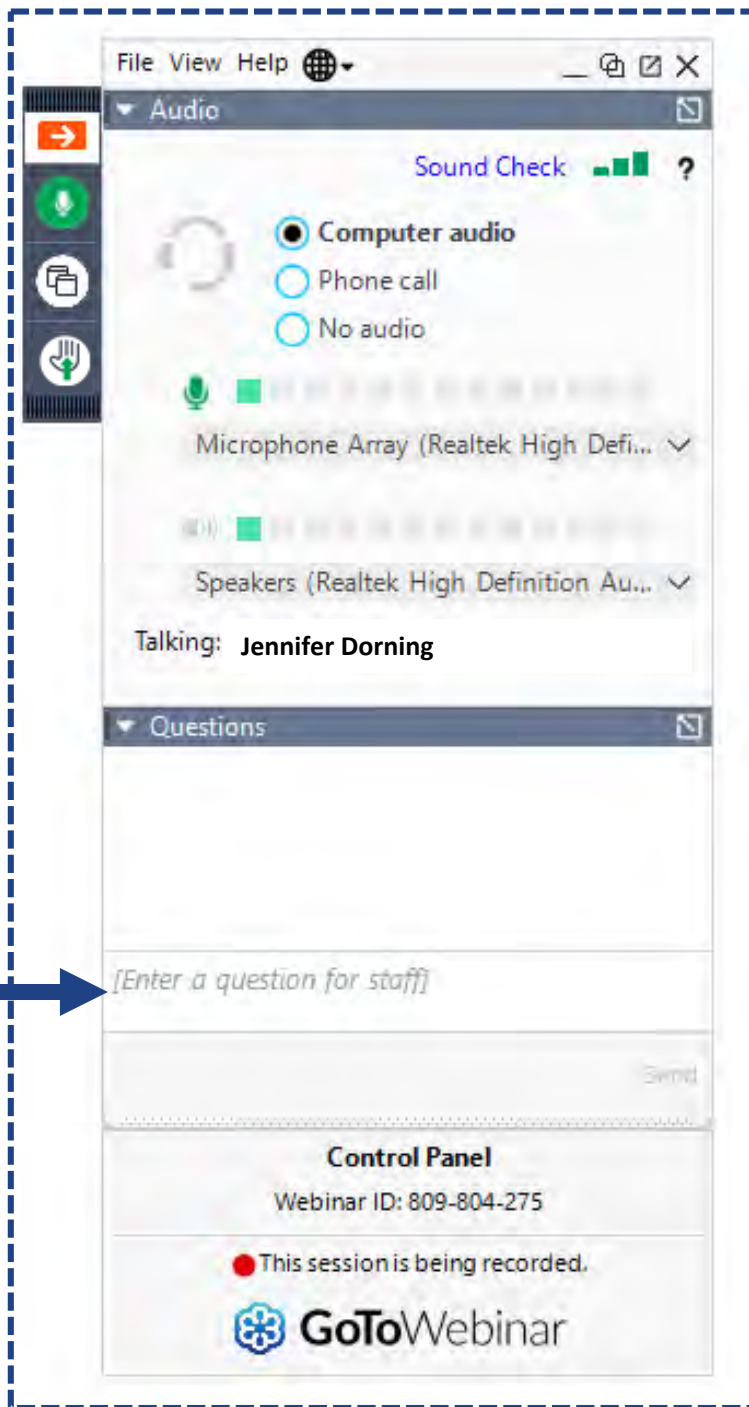
(requested or downloaded
before the meeting)

www.swflroads.com/sr780/fruitvillevision

We want your INPUT
During the Meeting!



Type your
comments or
questions in the
control panel
**Questions
panel.**



We will address
some comments
and questions
during the
meeting, however
ALL
correspondence
will be posted on
the website later.

**Continue the
conversations
AFTER the Meeting**



Bessie.Reina@dot.state.fl.us

or

June.Farrell@dot.state.fl.us

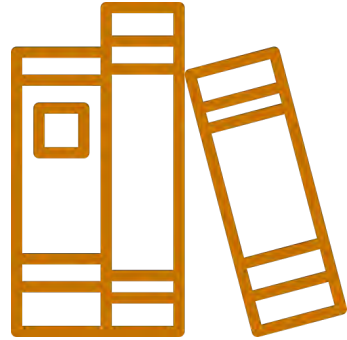


Florida Department of Transportation
801 N. Broadway
Bartow, FL 33830



www.swflroads.com/sr780/fruitvillevision

Please submit your comments by **July 10, 2020**



All comments
and questions
are part of the
Public Record.

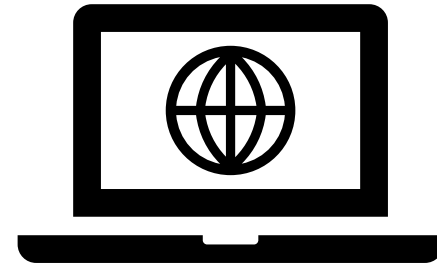


Submit
comments, input
or questions by
July 10, 2020

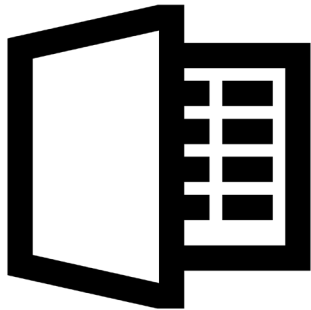
Public Notice



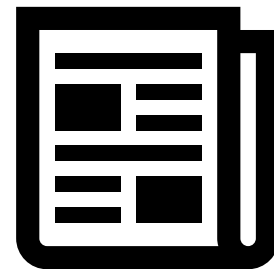
Emails to project contacts list



Project webpage



Florida Administrative Register



Newspaper



Social media

www.swflroads.com/sr780/fruitvillevision

TITLE VI INFORMATION

The Florida Department of Transportation solicits public participation without regard to race, color, national origin, age, sex, religion, disability, or family status. Persons wishing to express their concerns relative to FDOT compliance with Title VI may do so by contacting:

Cynthia Sykes, FDOT District One Title VI Coordinator
Email: Cynthia.Sykes@dot.state.fl.us



SR 780/ Fruitville Road Corridor Vision Plan

FDOT District One
June 25, 2020

*THIS IS A VISIONING EXERCISE AND THE RESULTS OF THIS WILL VARY
BASED ON INPUT RECEIVED FROM STAKEHOLDERS AND THE COMMUNITY

Fruitville Road - Corridor Vision Plan

Speakers and Panelists



Bessie Reina
FDOT Planning Studio



Jay Hood
S&ME

Sarasota County
Paula Wiggins

City of Sarasota
Colleen McGue



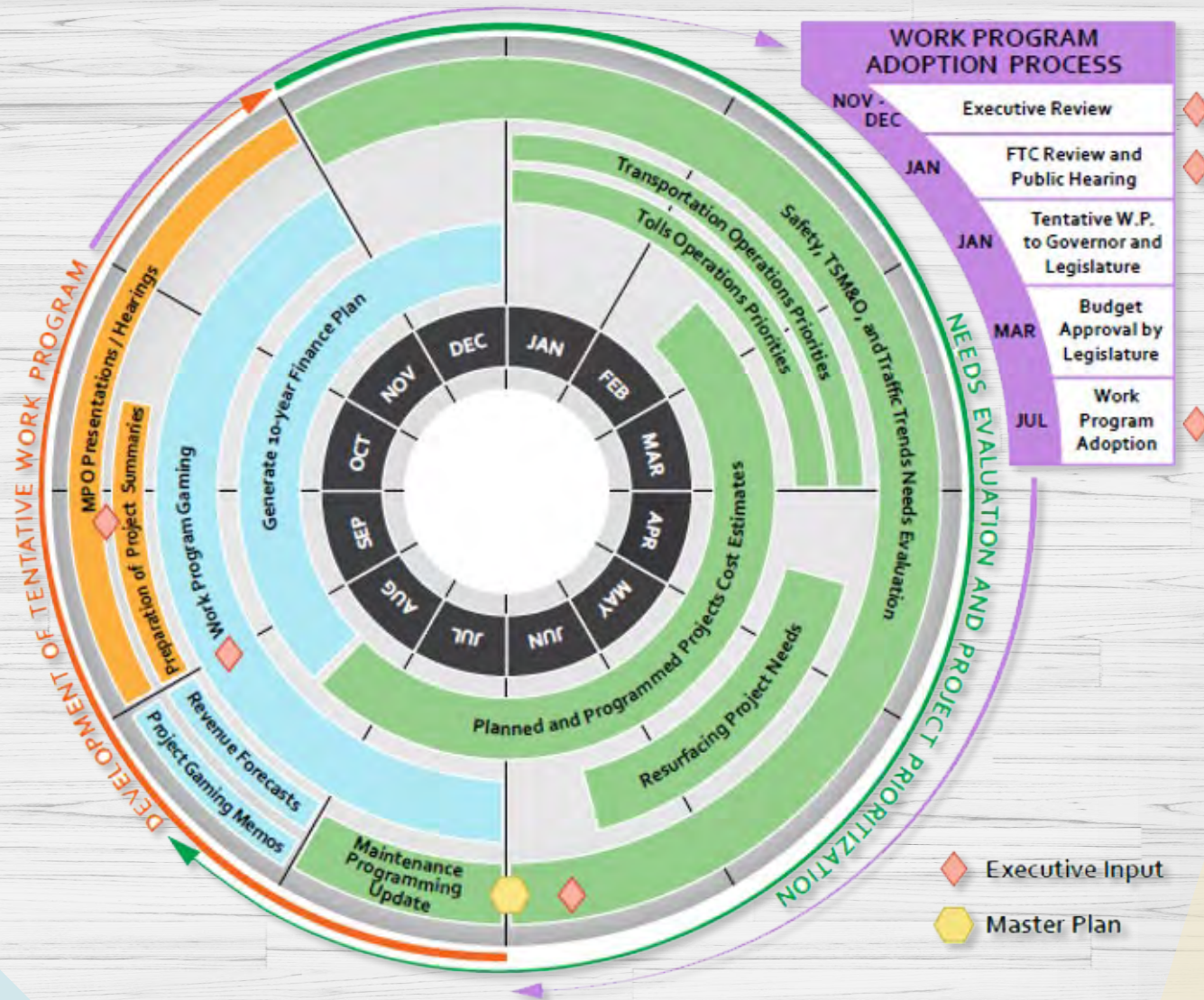


L.K. Nandam, PE
FDOT District One Secretary

Corridor Vision Plan Intent

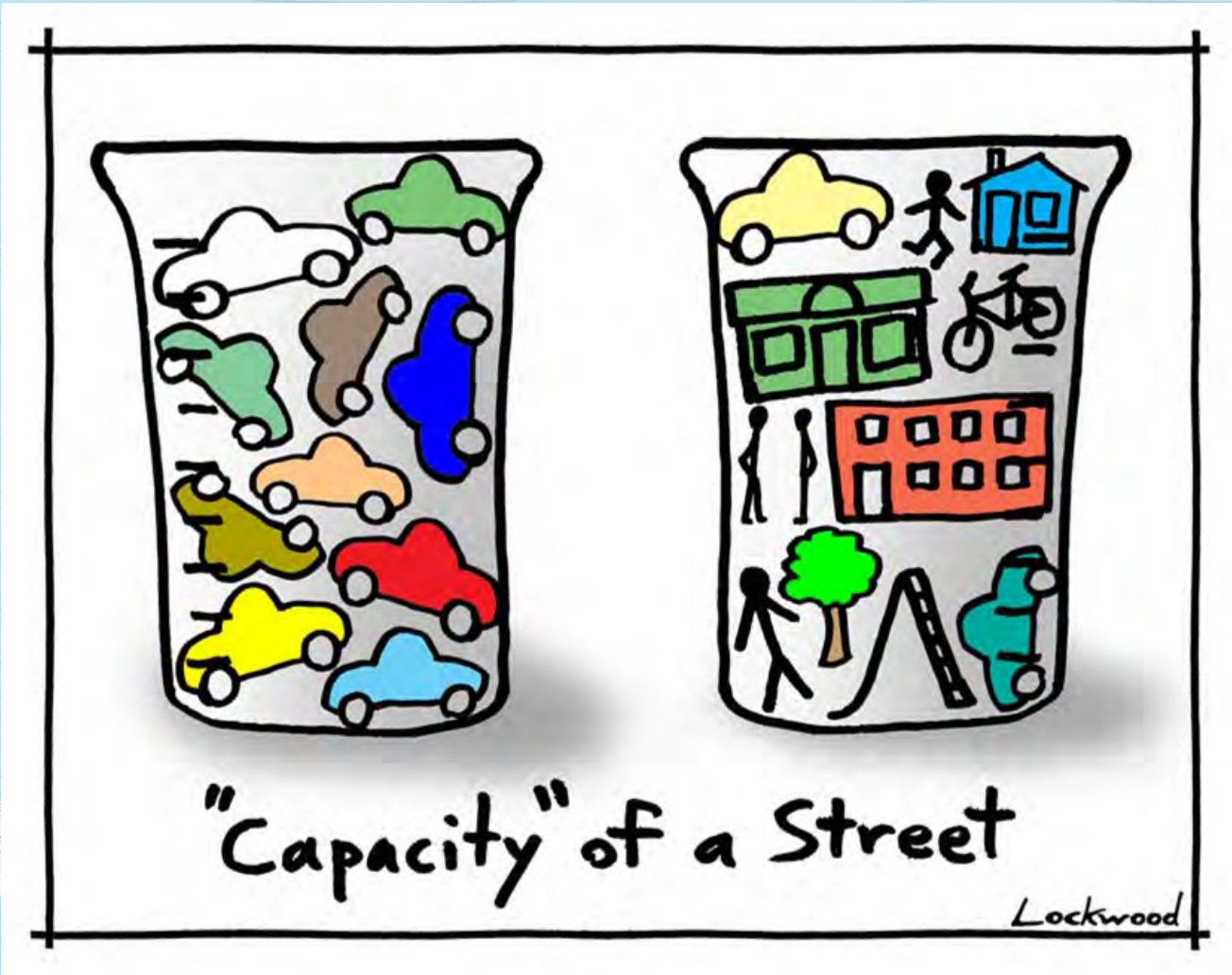
- L.K. Nandam, District Secretary Initiative
- Vision for every state highway in the District
- District One effort

Fruitville Road - Corridor Vision Plan



Work Program Development Process

WHY A CORRIDOR VISION PLAN?



A Context-Sensitive System of 'Complete Streets'

Considering existing and future local land development patterns and built form



C1
Natural

C2
Rural

C2T
Rural
Town

C3R
Suburban
Residential

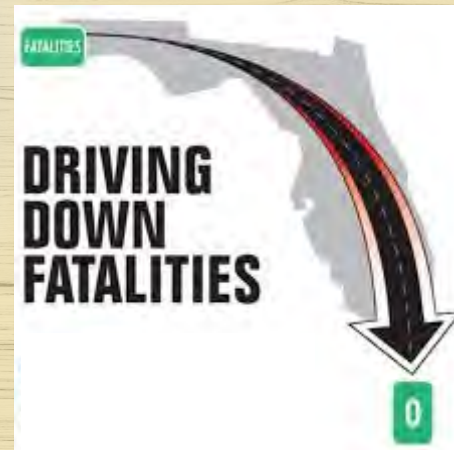
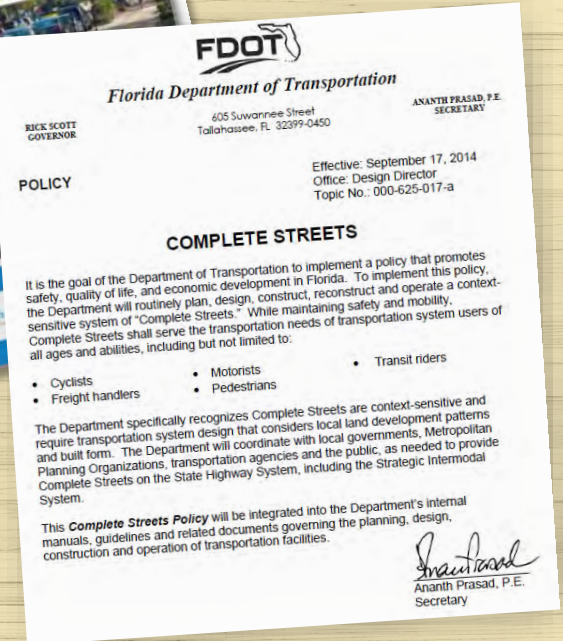
C3C
Suburban
Commercial

C4
Urban
General

C5
Urban
Center

C6
Urban
Core

Fruitville Road - Corridor Vision Plan



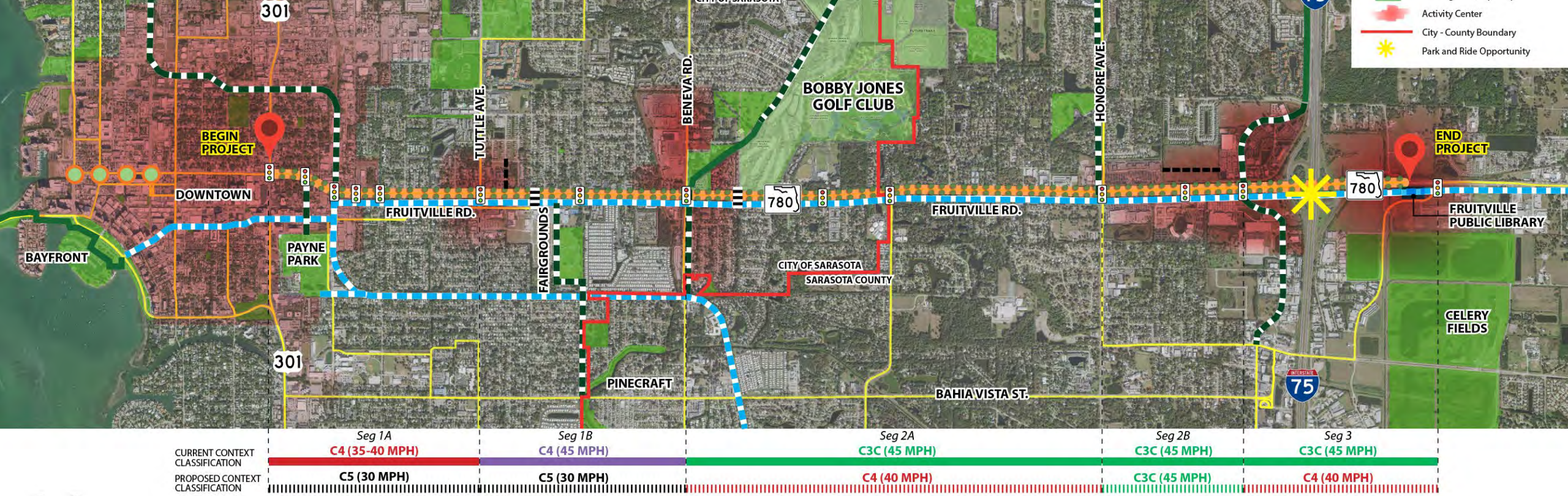
How do we get there?

Context

Vision

Strategies

P A R T N E R S H I P S



WHERE ARE WE NOW?

- Project Information
 - Limits: US 301 to Just East of I-75
 - FDOT Operation
 - < Six Miles
 - City and County Project Coordination

Bobby Jones Golf Course

WHERE ARE WE NOW, cont.?

Existing Conditions

- Safety and traffic
- Socioeconomic conditions
- Cultural resources



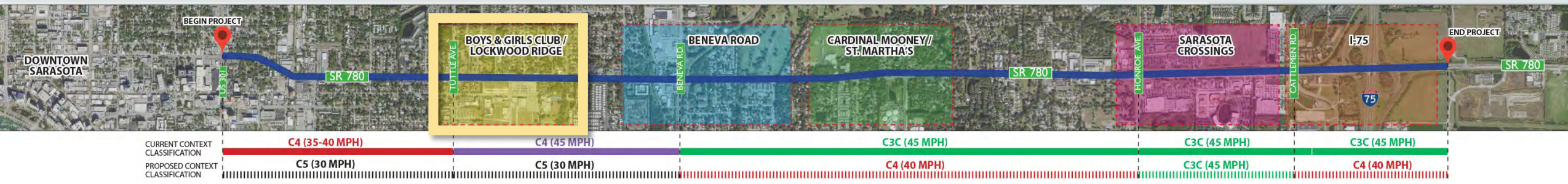
WHERE ARE WE NOW, cont.?

Existing Conditions

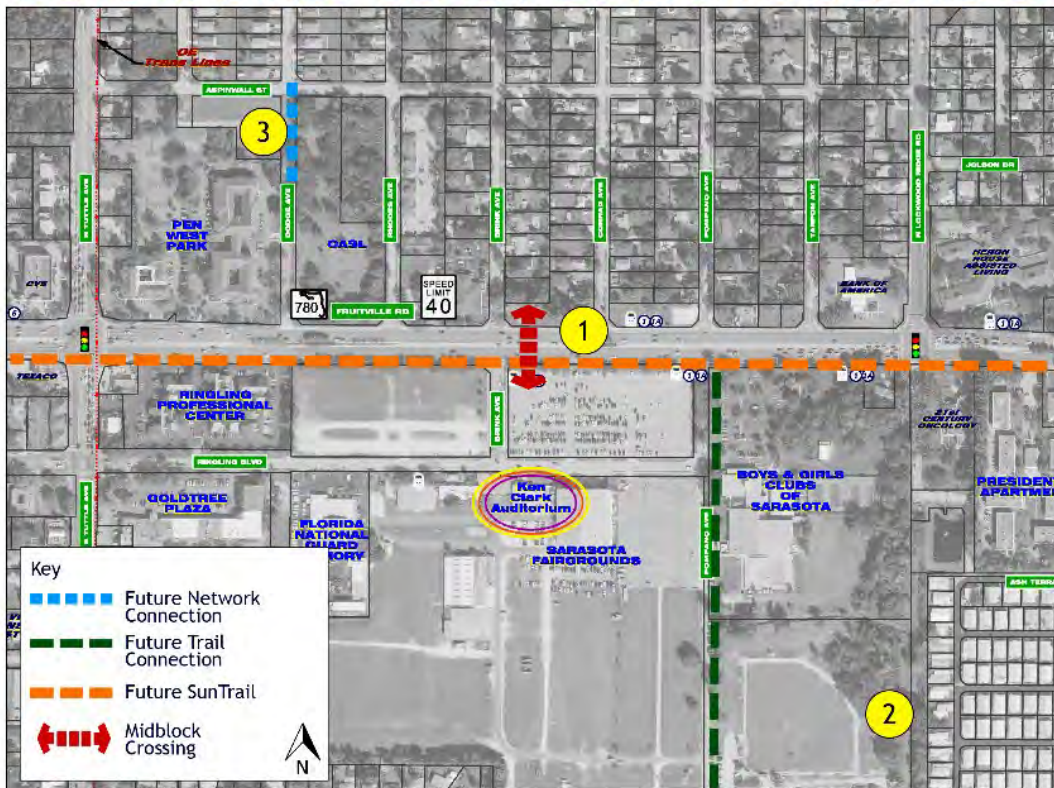
- Land use
- Policy
- Concurrent planning
- Multi-modal connections

Nathan Benderson Park

Fruitville Road - Corridor Vision Plan



BOYS & GIRLS CLUB / LOCKWOOD RIDGE

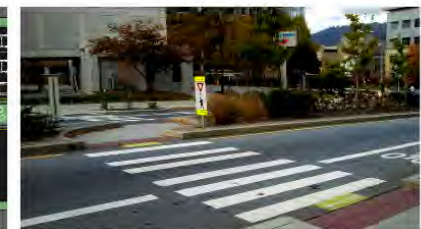
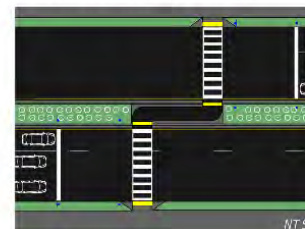


1 OBSERVATION

There is a lot of weekend traffic around the Fairgrounds and its surrounding parks. There is a lack of safe pedestrian connections between the Fairgrounds and the neighborhood to the North.

OPPORTUNITY

To introduce midblock crossing at SR 780 to provide pedestrian connection to the neighborhood to the North.



2 OPPORTUNITY

To provide trail connection to the future SunTrail. Refer to Regional Map for overall trail connection of the area.

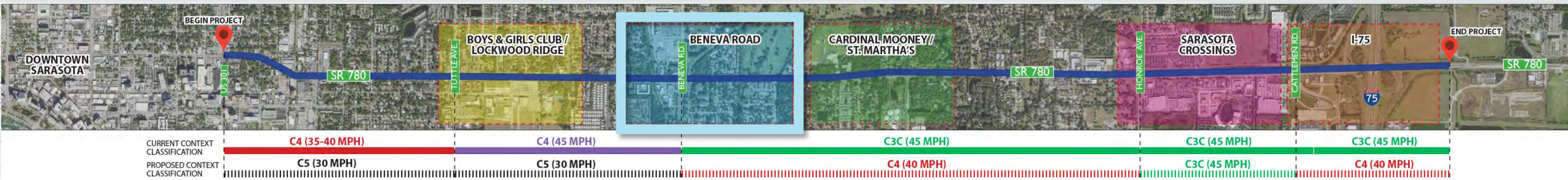
3 OBSERVATION

This portion of Dodge Ave. is disconnected from the rest of the street.

OPPORTUNITY

To provide new street and sidewalk to improve pedestrian and vehicular connectivity.

Fruitville Road - Corridor Vision Plan



BENEVA ROAD



1 OBSERVATION

There is a lack of pedestrian crossing opportunities between the two signals. With the potential redevelopment of Bobby Jones Golf Course, the new open space could become a regional destination for its surrounding neighborhoods and will generate more pedestrian activity within the corridor.

OPPORTUNITY

To introduce midblock crossing at SR 780 to enhance connectivity to the neighborhoods to the South.

2 OPPORTUNITY

To provide trail connection to the future SunTrail. Refer to Regional Map for overall trail connection of the area.

3 OBSERVATION

Pedestrian safety and vehicular queuing at the intersection.

OPPORTUNITY

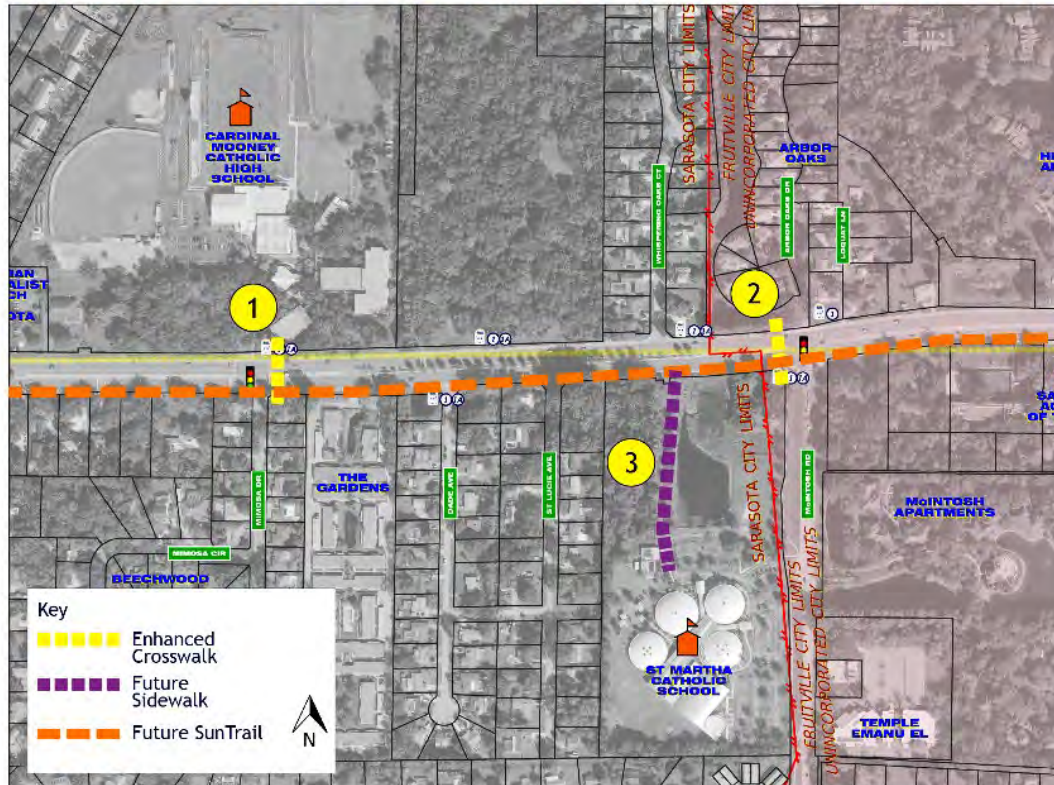
To conduct an intersection analysis, provide high visibility crosswalks, introduce refuge islands and adjust signal timing.



Fruitville Road - Corridor Vision Plan



CARDINAL MOONEY / ST. MARTHA'S

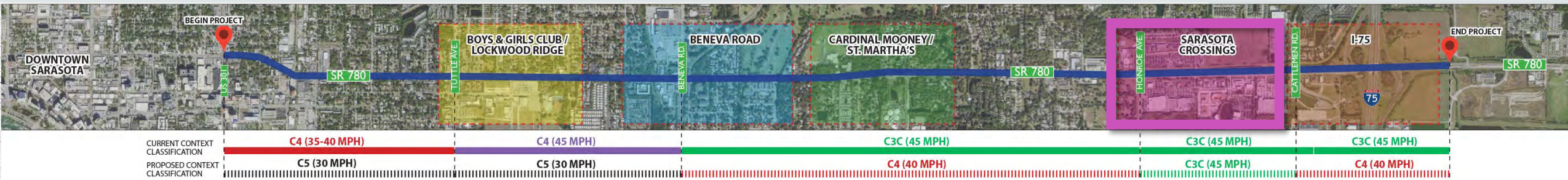


- 1** **OBSERVATION**
Pedestrian safety with heavy student and senior demographics in this area.

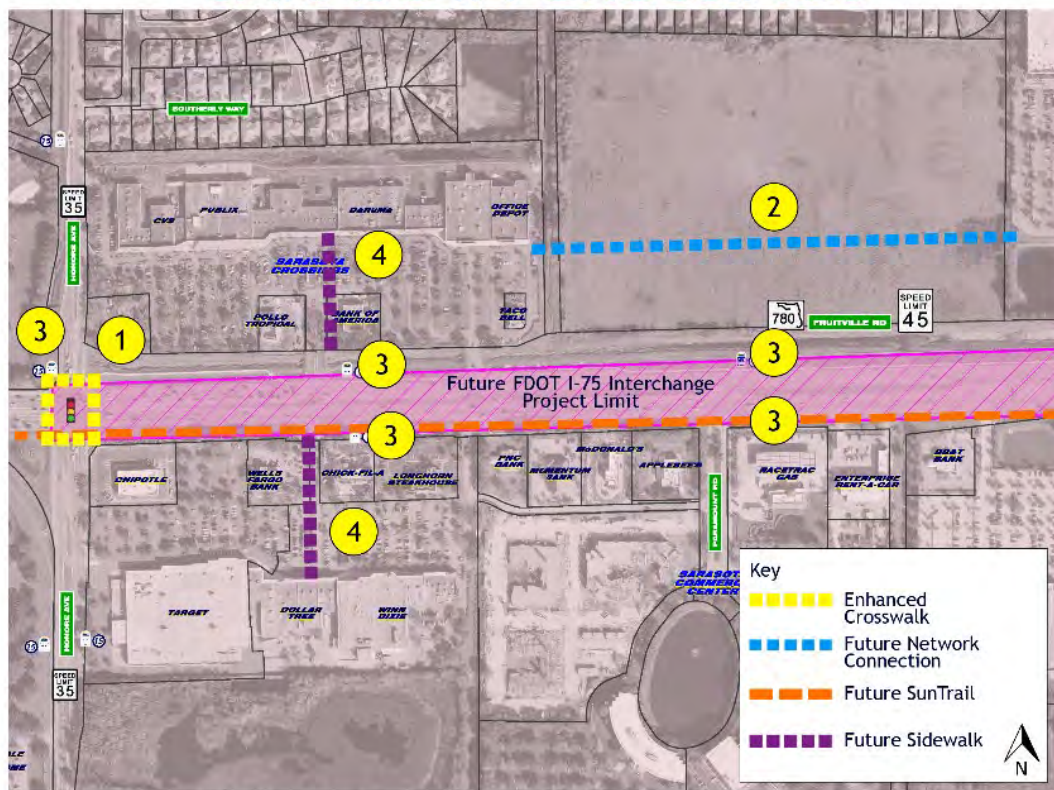
OPPORTUNITY
To conduct an intersection analysis, provide high visibility crosswalks, introduce refuge islands and adjust signal timing.
- 2** **OBSERVATION**
Pedestrian safety with heavy student and senior demographics in this area.

OPPORTUNITY
To conduct an intersection analysis, provide high visibility crosswalks, introduce refuge islands and adjust signal timing.
- 3** **OPPORTUNITY**
For St. Martha Catholic School to provide connection to the future SunTrail.

Fruitville Road - Corridor Vision Plan



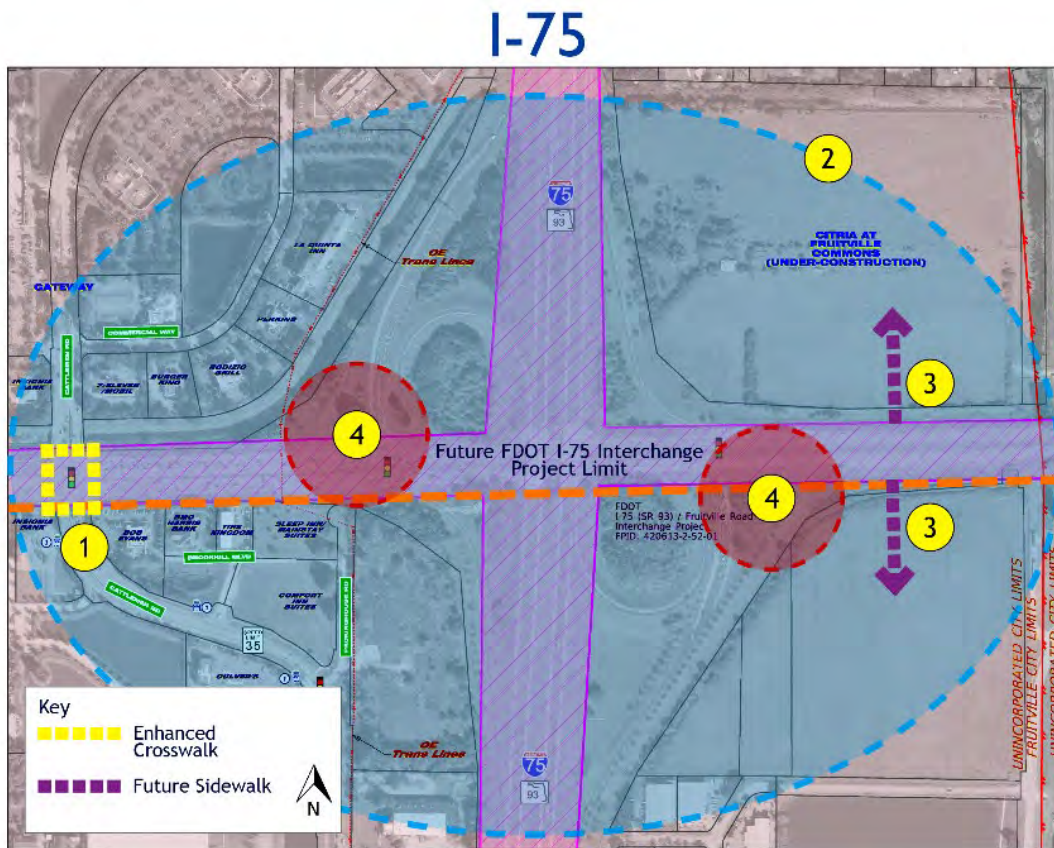
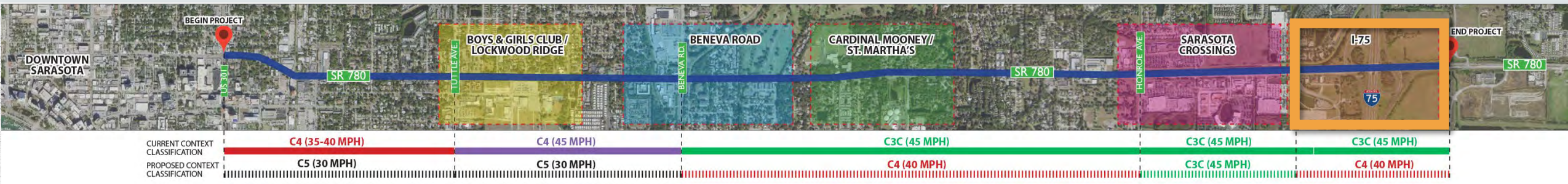
SARASOTA CROSSINGS



- | | |
|--|---|
| <p>1 ! OBSERVATION</p> <p>Unsafe crosswalks at the intersection. This intersection connects the two commercial plazas and presents a lot of pedestrian circulation.</p> | <p>💡 OPPORTUNITY</p> <p>To enhance existing crosswalks by introducing refuge areas.</p> |
| <p>2 ! OBSERVATION</p> <p>There is lack of connectivity between the commercial plazas.</p> | <p>💡 OPPORTUNITY</p> <p>To provide connections between two plazas to relieve relying on SR780 for local trips.</p> |
| <p>3 💡 OPPORTUNITY</p> <p>To enhance transit stops with pedestrian amenities/bus pull offs.</p> | |
| <p>4 ! OBSERVATION</p> <p>There is lack of pedestrian connectivity from public sidewalks/ future SunTrail to commercial plazas amplified by large setback to storefronts.</p> | <p>💡 OPPORTUNITY</p> <ol style="list-style-type: none"> To provide bike and pedestrian connections from public right-of-way to commercial plazas. Update Land Development code to place commercial buildings toward the street and place parking to the rear when redeveloped in order to create walkable and safe environment, and to enhance community identity and sense of place. |



Fruitville Road - Corridor Vision Plan



- 1** **!** **OBSERVATION**

Unsafe crosswalks at the intersection. This intersection connects the two commercial plazas and presents a lot of pedestrian circulation.
- 2** **💡** **OPPORTUNITY**

To enhance existing crosswalks by introducing refuge areas.
- 2** **💡** **OPPORTUNITY**

To introduce a public-private partnership for a park and ride garage, with shuttle services between I-75 and the downtown/beaches.
- 3** **💡** **OPPORTUNITY**

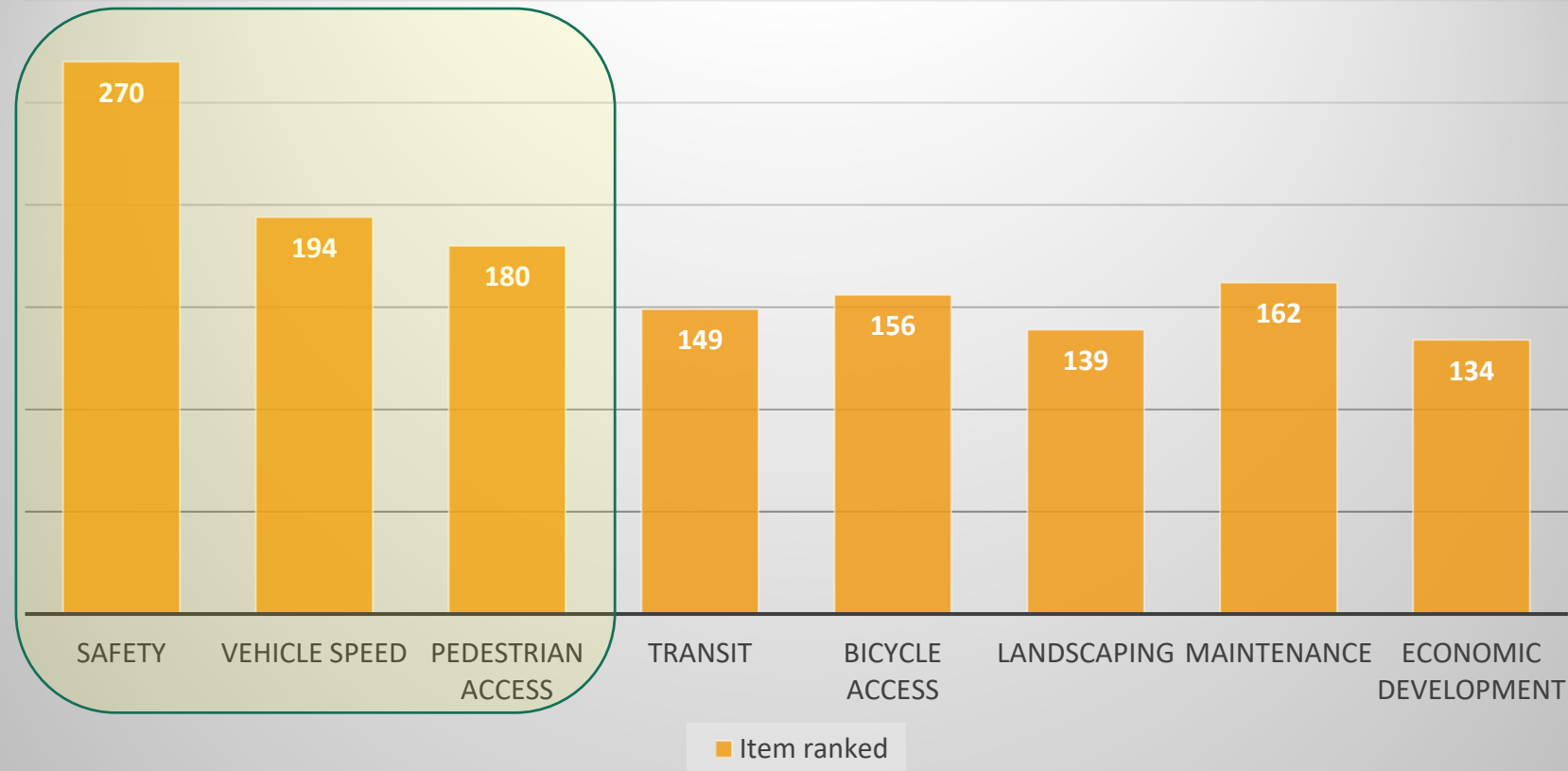
To provide sidewalk connection from public sidewalk to future development.
- 3** **!** **OBSERVATION**

Drivers getting off I-75 do not reduce speed approaching SR780.
- 4** **💡** **OPPORTUNITY**

To introduce a gateway feature or hardscape/landscape treatment to help slow drivers down approaching SR780.

Survey #1 results

Priorities from Survey #1



Comments and Questions

- Please give us your observations regarding SR 780/Fruitville Road
- Ask questions
- Remember to use your Questions pane and hit send.

Schedule 2020

- January** - Tech Memos
- February** - Stakeholders Meeting
- May** - Survey #1
- June** - Virtual Public Meeting
- August** - Survey #2
- Fall 2020** - Brochure



THANK YOU

Bessie Reina, CNU-A

Planning Studio Manager Bessie.Reina@dot.state.fl.us

June Farrell, AICP

Consultant Project Manager June.Farrell@dot.state.fl.us

Project website:

www.swflroads.com/sr780/fruitvillevision

Please share your observations and input with us by

July 10, 2020